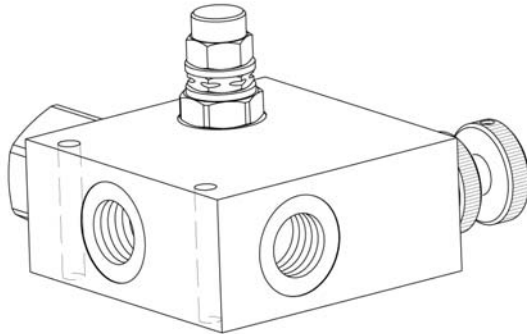
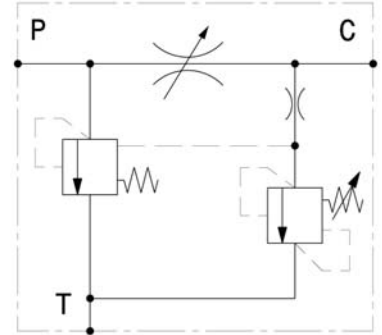


Valvola regolatrice di flusso compensata tre vie con valvola limitatrice di pressione  
 3 ways, pressure compensated flow regulator valve with relief valve

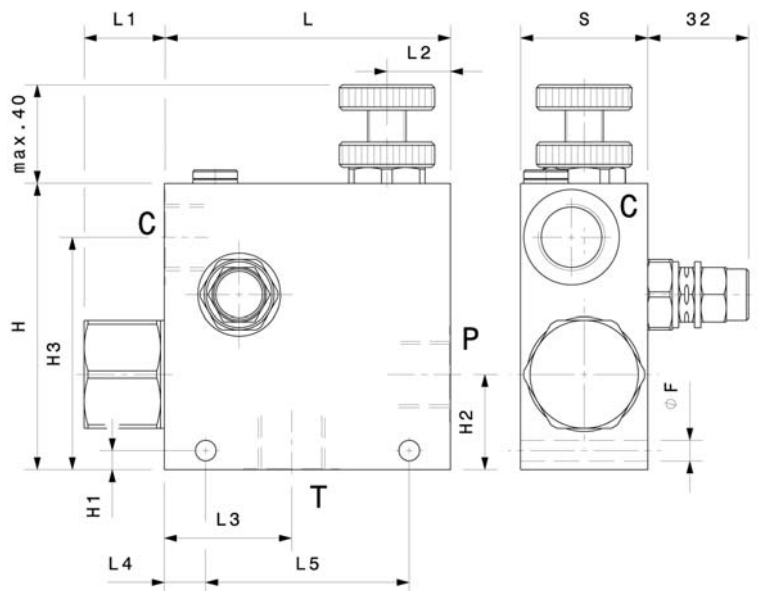
## mod. RF-A-VLP10



Corpo in alluminio  
 Aluminium body



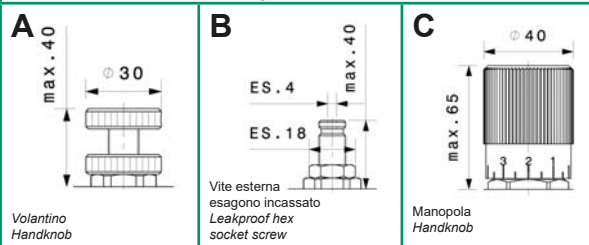
Modello Type	P, C, T	Portata max Max flow		Pressione max Max pressure
		Ingresso Inflow P	Regolata Regulated C	
RF-A-VLP10-38	3/8" GAS	60 l/min 16 gpm	35 l/min 9 gpm	270 bar 3900 psi
RF-A-VLP10-12	1/2" GAS	100 l/min 26 gpm	65 l/min 17 gpm	270 bar 3900 psi
RF-A-VLP10-34	3/4" GAS	150 l/min 40 gpm	90 l/min 24 gpm	270 bar 3900 psi
RF-A-VLP10-10	1" GAS	280 l/min 74 gpm	190 l/min 50 gpm	270 bar 3900 psi



Dati e tarature ottenuti usando olio con viscosità 30 cSt a 50°C  
 Performances and calibrations are carried out by using hydraulic oil with 30 cSt viscosity at 50°C

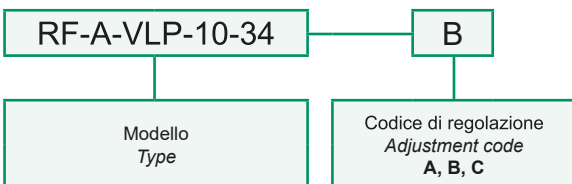
Viscosità consigliate Recommended viscosity	10 ÷ 420 cSt
Temperature di lavoro Working temperature	-20 ÷ +90 °C
Filtrazione assoluta Absolute filtration	25 µ

### Regolazioni Adjustments



Modello Type	L	H	S	L1	L2	L3	L4	L5	H1	H2	H3	F
RFVLP10-38	90	90	40	26	20	39	13	64	6	30	72	6.5
RFVLP10-12	90	90	40	26	20	39	13	64	6	30	72	6.5
RFVLP10-34	110	110	50	35	30	45	11	88	7	45	87	8.5
RFVLP10-10	110	110	50	35	30	45	11	88	7	40	87	8.5

### Sigla di ordinazione / Ordering code



Valvola limitatrice di pressione Relief Valve	Taratura Setting	180 bar
	Campo di regolazione Setting Range	40 ÷ 250 bar