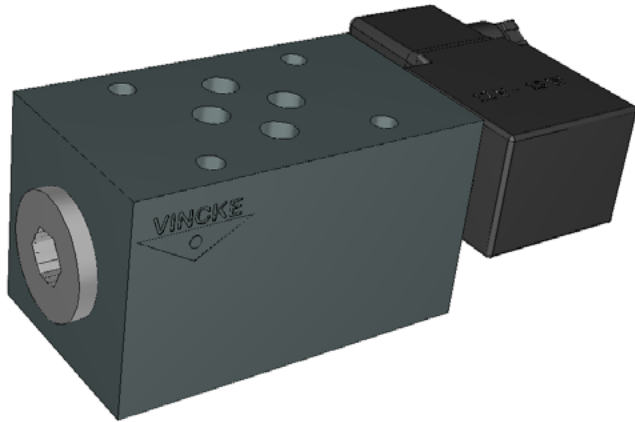


Electrical check valve



ECV series modular Electric check valve free flow in one direction and block flow in the counter direction.

Technical Specification

Specification	Cetop 3 / NG6
Max. working pressure (MPa)	350
Max. Flow (L/min)	50
Working fluid	Mineral oil: phosphate-ester
Fluid temp. (°C)	-20~70
Viscosity (mm ² /s)	2.8~500
O penning pressure	a: 0.05 b: 0.25 c: 0.4

Cleanliness

The maximum allowable cleanliness of the oil should be according to 9th degree of Standard NAS1638. It is suggested that the minimum filter rating should be $\beta_{10} \geq 75$.

Ordering Code

ECV-6-*-**

Electrical Check Valve

Nominal size 6 Cetop 3, 10 Cetop 5,

A A Pipeline

B B Pipeline

W AB Pipeline

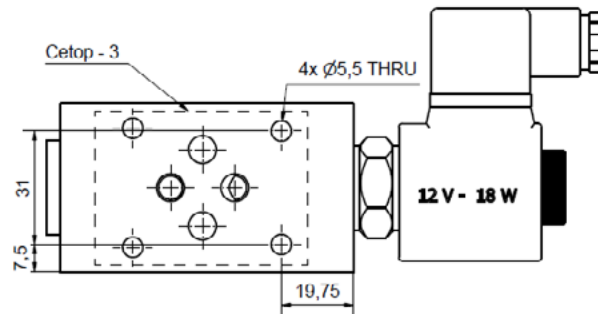
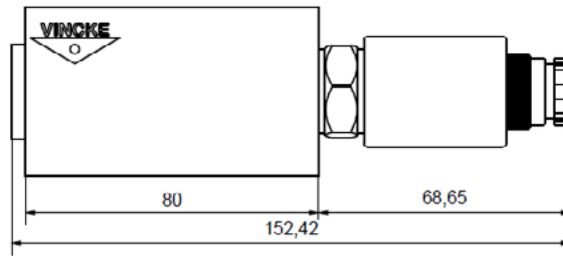
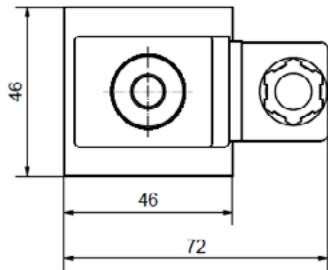
Seal Material
Omit NBR Seals
V FPM Seals

O penning pressure
a 0.05
b 0.25
c 0.4

Electrical check valve

External Dimensions

Cetop 3 / NG6



Code Symbol

