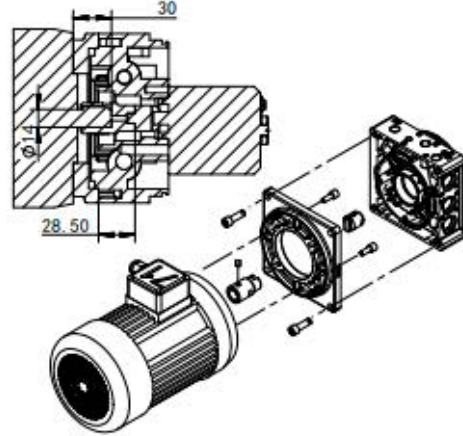
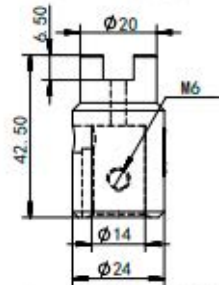


● **COUPLING T-71**

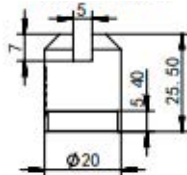
Mounting kit for frame 71 B14 AC Motors



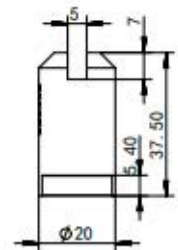
COUPLINGS
MOTOR SIDE
VNKPP070502



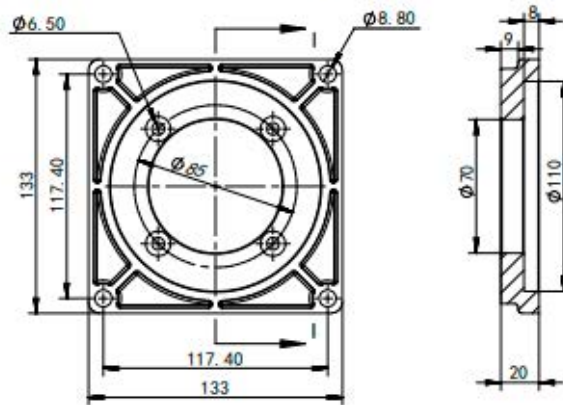
GROUP 1.0 PUMP SIDE
VNKPP070501



GROUP 0.5 PUMP SIDE
VNKPP070103



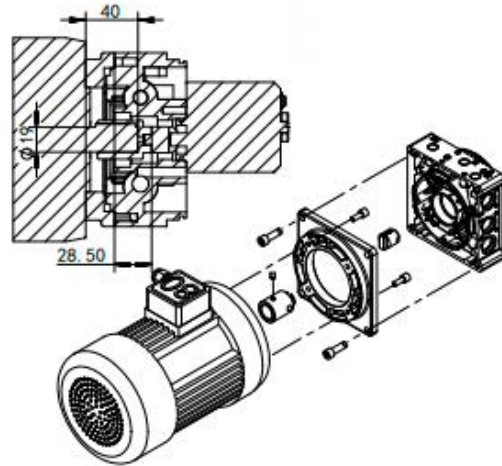
ALUMINIUM FLANGE: VNKPP080202



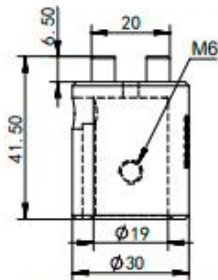
Description	Part Number	Weight (kg)
Motor side Coupling	VNKPP070502	0.095
Group 0.5 Pump Side Coupling	VNKPP070103	0.080
Group 1.0 Pump Side Coupling	VNKPP070501	0.050
Aluminium Flange	VNKPP080202	0.30
Motor Flange Assembly Screw	4X DIN 912 M6X16	0.030
Manifold Flange Assembly Screw	4X DIN 912 M8X25	0.060
Coupling Screw	DIN 912 M6X8	-

● COUPLING T-80

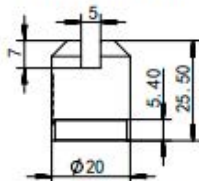
Mounting kit for frame 80 B14 AC Motors



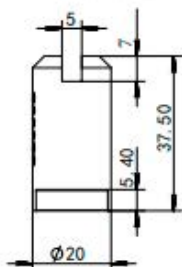
COUPLINGS
MOTOR SIDE
VNKPP070503



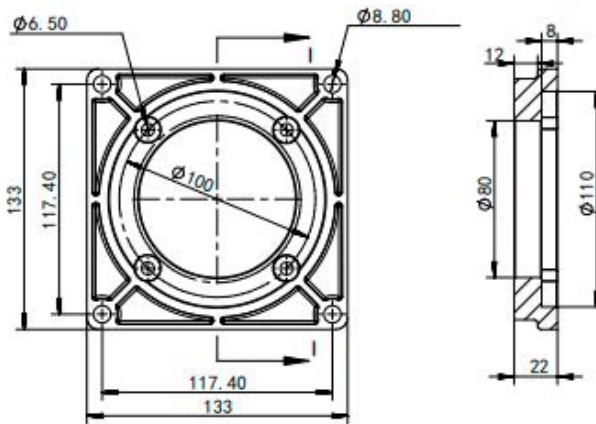
GROUP 1.0 PUMP SIDE
VNKPP070501



GROUP 0.5 PUMP SIDE
VNKPP070103

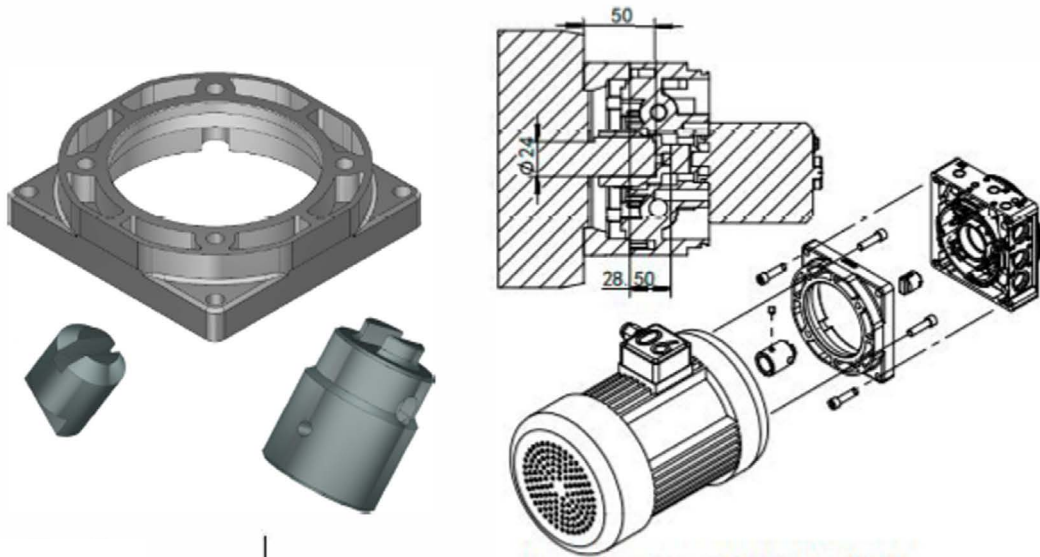


ALUMINIUM FLANGE: VNKPP080203



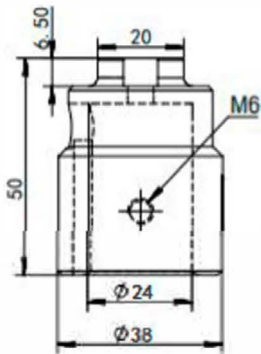
Description	Part Number	Weight (kg)
Motor side Coupling	VNKPP070503	0.125
Group 0.5 Pump Side Coupling	VNKPP070103	0.080
Group 1.0 Pump Side Coupling	VNKPP070501	0.050
Aluminium Flange	VNKPP080203	0.310
Motor Flange Assembly Screw	4X DIN 912 M6X16	0.030
Manifold Flange Assembly Screw	4X DIN 912 M8X25	0.060
Coupling Screw	M6X8	-

● COUPLING T-90

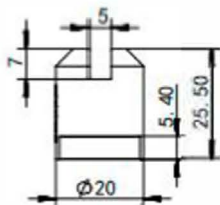


COUPLINGS

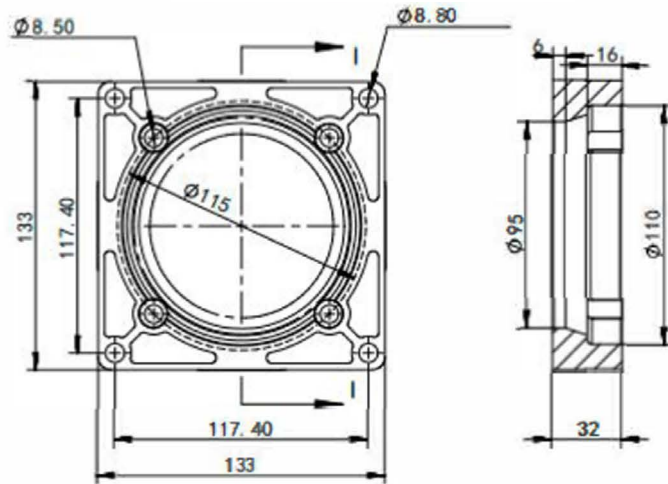
MOTOR SIDE
VNKPP070504



GROUP 1.0 PUMP SIDE
VNKPP070501

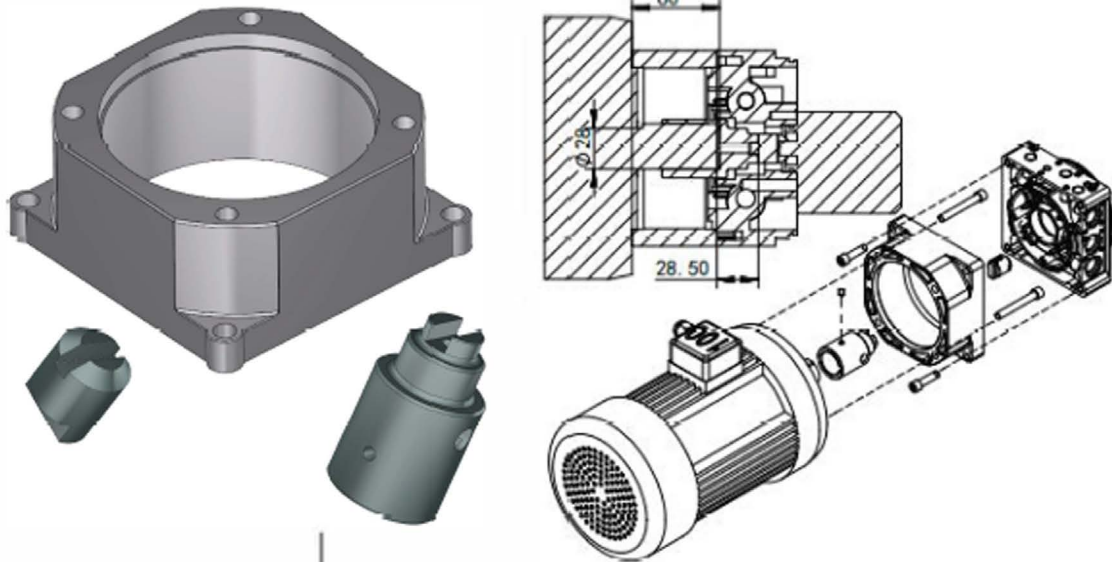


ALUMINIUM FLANGE: VNKPP080204



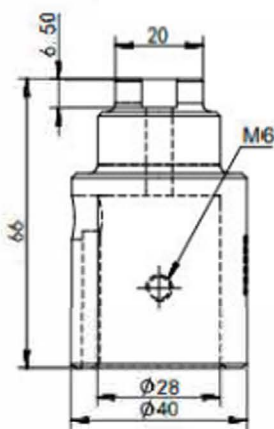
Description	Part Number	Weight (kg)
Motor side Coupling	VNKPP070504	0.220
Group 1.0 Pump Side Coupling	VNKPP070501	0.050
Aluminium Flange	VNKPP080204	0.390
Motor Flange Assembly Screw	4X DIN 912 M8X16	0.050
Manifold Flange Assembly Screw	4X DIN 912 M8X30	0.065
Coupling Screw	DIN 912 M6X8	-

● COUPLING T-100/112

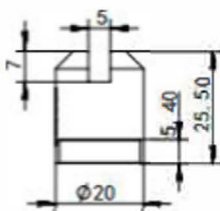


COUPLINGS

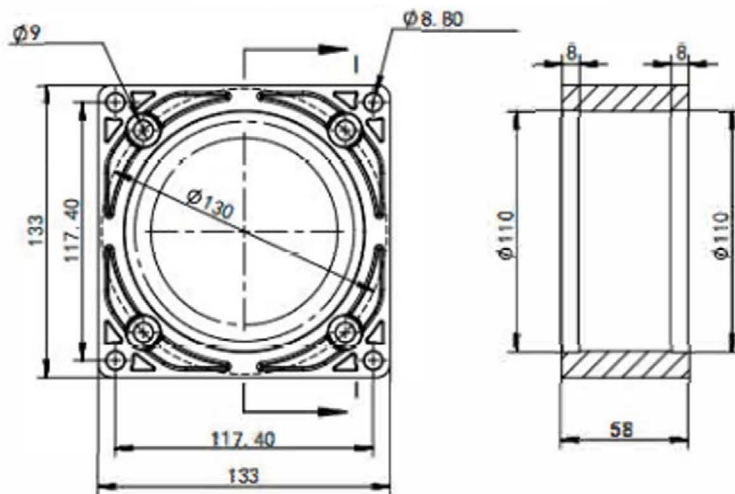
MOTOR SIDE
VNKPP070505



GROUP 1.0 PUMP SIDE
VNKPP070501



ALUMINIUM FLANGE: VNKPP080205



Description	Part Number	Weight (kg)
Motor Side Coupling	VNKPP070504	0.310
Group 1.0 Pump Side Coupling	VNKPP070501	0.050
Aluminium Flange	VNKPP080205	0.700
Motor Flange Assembly Screw	4X DIN 912 M8X55	0.125
Manifold Flange Assembly Screw	4X DIN 912 M8X30	0.065
Coupling Screw	DIN M6X8	-