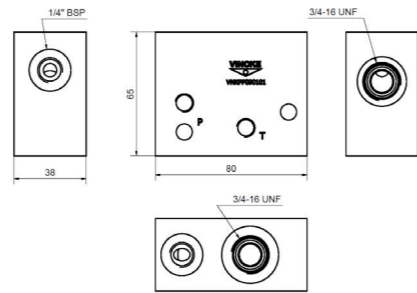
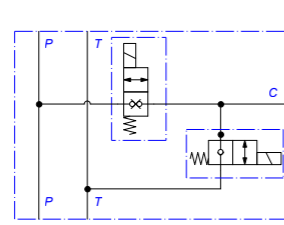


● MANIFOLD TYPES

ORDER CODE	DESCRIPTION	SYMBOL	DIMENSIONS
------------	-------------	--------	------------

VNKPP090101

Modular Manifold additional Single-Action function

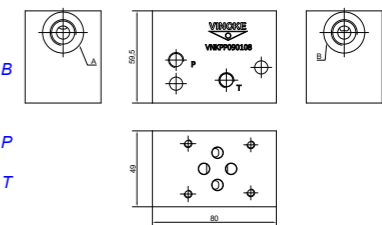
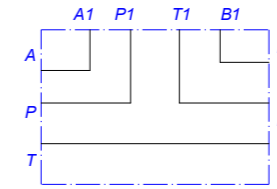


P-T Port: 1/8"BSPP
C Port: 1/4" BSPP
Dimensions in mm

ORDER CODE	DESCRIPTION	SYMBOL	DIMENSIONS
------------	-------------	--------	------------

VNKPP090108

NG8(CETOP3) Modular WManifolds, Series connection Lateral Ports



P-T Port: 1/8"BSPP
A,B Port: 3/8"BSPP
Other porting is available
Dimensions in mm

VNKPP090105	Modular Manifold for 3/4-16 UNF Cartridges, Two Way, Two Position		<p>P-T Port: 1/8"BSPP P1 C1 Port: 1/4"BSPP C2 Port: 3/8"BSPP Other porting is available Dimensions in mm</p>
-------------	---	--	--

VNKPP090109	NG6(CETOP3) Modular Manifolds Parallel Connection Rear Ports.		<p>P T Port: 1/8"BSPP A B Port: 3/8"BSPP Other porting is available Dimensions in mm</p>
-------------	---	--	--

VNKPP090106	Motor Side 90° rotation Manifold		<p>P-T Port: 1/8"BSPP P1 T1 Port: 1/4"BSPP Dimensions in mm</p>
-------------	----------------------------------	--	---

VNKPP090113	Spacer Manifold Adapter		<p>Dimensions in mm</p>
-------------	-------------------------	--	-------------------------

VNKPP090107	Motor Side 90° Rotation Manifold		<p>P T Port: 1/8"BSPP P1 T1 Port: 1/4"BSPP Dimensions in mm</p>
-------------	----------------------------------	--	---

VNKPP090114	NG6(CETOP3) Modular Manifolds Parallel Connection Lateral Ports.		<p>P T Port: 1/8"BSPP A B Port: 3/8"BSPP Other porting is available Dimensions in mm</p>
-------------	--	--	--